

# CHAPMAN

HEAVY DUTY MACHINERY

---

EU PRICE LIST  
2023<sub>v2</sub>

# CONTENTS



**FM SERIES** FLAIL MOWER **04**



**CFM SERIES** COMPACT FLAIL **06**



**RM SERIES** ROTARY MOWER **07**



**TS600** TRAILED STRIMMER **08**



**W240** WEED WIPER **09**



**PC SERIES** Paddock CLEANER **10**



**PC120E** ELECTRIC SWEEPER **11**



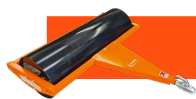
**MG250** ARENA LEVELLER **12**



**AH200** ARENA HARROW **13**



**TH200** TINE HARROW **14**



**FR150** FIELD ROLLER

**15**



**TF350** STOCK FEEDER

**16**



**MF350** MOUNTED FEEDER

**17**



**TGF350** GAME FEEDER

**18**



**MGF350** MOUNTED GAME

**19**



**DT100** TIPPING TRAILER

**20**



**FT100** FLATBED TIPPER

**21**



**ST150** STOCK TRAILER

**22**



**LT150** LOW SIDED TRAILER

**23**



**BT500** BALE TRANSPORTER

**24**

# FM120 FLAIL MOWER



MODEL	DESCRIPTION	RETAIL
<b>FM120</b>	Standard Specification: - 1.2m Cut - 21hp Honda V Twin - Electric Start - 22x11x8" Tyres - Steel Y Flails - Centrifugal Clutch	<b>€5500</b>
<b>FM120 PRO</b>	Upgrade to Pro Spec to include: - 25hp Honda Fuel Injected V Twin - Hardened Hammer Flails - Double Fly Weight Clutch - Oil Cooled	<b>€6250</b>
AVAILABLE OPTIONS		
<b>+BB</b>	Breaker Bar to deflect vegetation such as reeds, rushes etc	<b>+€130</b>
<b>+TA</b>	Twin axle setup for rough terrain and reduced ground pressure	<b>+€650</b>
<b>+CB</b>	Cutter bar to increase mulching and decrease chop size	<b>+€130</b>
<b>+JW</b>	Jockey Wheel - recommended for wheels trailing	<b>+€90</b>
COMMODITY CODE: 8433201000		

All prices exclude applicable taxes. We reserve the right to change pricing in line with significant exchange rate movements or application of import / export tariffs.

# FM150 FLAIL MOWER



MODEL	DESCRIPTION	RETAIL
<b>FM150</b>	Standard Specification: - 1.5m Cut - 21hp Honda V Twin - Electric Start - 22x11x8" Tyres - Steel Y Flails - Centrifugal Clutch	<b>€5700</b>
<b>FM150 PRO</b>	Upgrade to Pro Spec to include: - 25hp Honda Fuel Injected V Twin - Hardened Hammer Flails - Double Fly Weight Clutch - Oil Cooled	<b>€6450</b>
AVAILABLE OPTIONS		
<b>+BB</b>	Breaker Bar to deflect vegetation such as reeds, rushes etc	<b>+€130</b>
<b>+TA</b>	Twin axle setup for rough terrain and reduced ground pressure	<b>+€650</b>
<b>+CB</b>	Cutter bar to increase mulching and decrease chop size	<b>+€130</b>
<b>+JW</b>	Jockey Wheel - recommended for wheels trailing	<b>+€90</b>
COMMODITY CODE: 8433201000		

All prices exclude applicable taxes. We reserve the right to change pricing in line with significant exchange rate movements or application of import / export tariffs.

# CFM COMPACT FLAIL



MODEL	DESCRIPTION	RETAIL
<p><b>CFM150</b></p>	<p>Standard Specification:</p> <ul style="list-style-type: none"> <li>- 1.5m Cut</li> <li>- 370kg</li> <li>- 25-50hp Rating</li> <li>- 22 Hammer Flails</li> <li>- 0-350mm Hydraulic Offset</li> <li>- 25-100mm Cutting Height</li> <li>- Suitable for CAT 1 &amp; 2 Hitches</li> <li>- 2200 RPM Rotor Speed</li> <li>- Triple B Belt Drive</li> <li>- Rear Roller Inclusive</li> </ul>	<p><b>€3750</b></p>
<p><b>CFM180</b></p>	<p>Standard Specification:</p> <ul style="list-style-type: none"> <li>- 1.8m Cut</li> <li>- 400kg</li> <li>- 25-50hp Rating</li> <li>- 28 Hammer Flails</li> <li>- 0-350mm Hydraulic Offset</li> <li>- 25-100mm Cutting Height</li> <li>- Suitable for CAT 1 &amp; 2 Hitches</li> <li>- 2200 RPM Rotor Speed</li> <li>- Triple B Belt Drive</li> <li>- Rear Roller Inclusive</li> </ul>	<p><b>€4000</b></p>
<p><b>COMMODITY CODE: 8433201000</b></p>		

All prices exclude applicable taxes. We reserve the right to change pricing in line with significant exchange rate movements or application of import / export tariffs.

# RM ROTARY MOWERS



MODEL	DESCRIPTION	RETAIL
<b>RM120</b>	Standard Specification: - 1.2m Cut - 13hp Honda Engine - Recoil Start - Triple Rotor - 19x7x8" Tyres	<b>€3450</b>
<b>RM150</b>	Standard Specification: - 1.5m Cut - 13hp Honda Engine - Recoil Start - Triple Rotor - 19x7x8" Tyres	<b>€3650</b>
<b>AVAILABLE OPTIONS</b>		
<b>+ES</b>	Electric Start	<b>+€550</b>
<b>COMMODITY CODE: 8433201000</b>		

All prices exclude applicable taxes. We reserve the right to change pricing in line with significant exchange rate movements or application of import / export tariffs.

# TS600 ATV STRIMMER



MODEL	DESCRIPTION	RETAIL
<b>TS600</b>	Standard Specification: <ul style="list-style-type: none"><li>- 735mm Cutting Width</li><li>- 50-250mm Cutting Height</li><li>- 13hp Honda Engine</li><li>- Recoil Start</li><li>- Offset draw bar</li><li>- Twin 600mm Cutting Heads</li><li>- 4.5mm diameter quick change plastic brush-cutter blades</li><li>- 16 x 6.54 R8" Tyres</li></ul>	<b>€3950</b>
<b>AVAILABLE OPTIONS</b>		
<b>+ES</b>	Electric Start	<b>+€550</b>
<b>COMMODITY CODE: 8433201000</b>		

All prices exclude applicable taxes. We reserve the right to change pricing in line with significant exchange rate movements or application of import / export tariffs.



# W240 WEED WIPER



MODEL	DESCRIPTION	RETAIL
<b>W240</b>	Standard Specification: <ul style="list-style-type: none"><li>- 2.4m Working width</li><li>- Electric Drive</li><li>- 60L Mounted Tank</li><li>- Spot Lance</li><li>- Electronic Controls</li><li>- 19x7x8" Wheels</li><li>- Carpet Applicator</li></ul>	<b>€3100</b>
<b>AVAILABLE OPTIONS</b>		
<b>+BR</b>	Upgrade applicator from carpet to brush for a more precise application	<b>+€950</b>
<b>+CA</b>	Additional control box c/w mounting plate & wiring for additional vehicle	<b>+€400</b>
<b>COMMODITY CODE: 8424491000</b>		

All prices exclude applicable taxes. We reserve the right to change pricing in line with significant exchange rate movements or application of import / export tariffs.

# PC SERIES COLLECTOR



MODEL	DESCRIPTION	RETAIL
<b>PC120</b>	<p>Standard Specification:</p> <ul style="list-style-type: none"> <li>- 1.2m working width</li> <li>- 6.5hp Honda Engine</li> <li>- Electric Start</li> <li>- 550L (approx) hopper</li> <li>- Electric hopper emptying</li> <li>- 19x7x8" Wheels</li> <li>- Adjustable front tine bar</li> <li>- Centrifugal clutch</li> <li>- 4 Rows of High Quality Brushes</li> <li>- Control Box</li> </ul>	<b>€5750</b>
<b>PC150</b>	<p>Standard Specification:</p> <ul style="list-style-type: none"> <li>- 1.5m working width</li> <li>- 6.5hp Honda Engine</li> <li>- Electric Start</li> <li>- 700L (approx) hopper</li> <li>- Electric hopper emptying</li> <li>- 19x7x8" Wheels</li> <li>- Adjustable front tine bar</li> <li>- Centrifugal clutch</li> <li>- 4 Rows of High Quality Brushes</li> <li>- Control Box</li> </ul>	<b>€6050</b>
<b>AVAILABLE OPTIONS</b>		
<b>+RT</b>	Remote throttle for use behind a Quad Bike	<b>+€70</b>
<b>COMMODITY CODE: 8433520000</b>		

All prices exclude applicable taxes. We reserve the right to change pricing in line with significant exchange rate movements or application of import / export tariffs.

# PC120E BATTERY POWERED



MODEL	DESCRIPTION	RETAIL
<b>PC120E</b>	Standard Specification: - 1.2m working width - eGX Electric Honda Engine - Battery Powered (PowerPack Included) - Fast Charger - 550L (approx) hopper - Manual Winch - 19x7x8" Wheels - Adjustable front tine bar - 4 Rows of High Quality Brushes	<b>€7150</b>
<b>AVAILABLE OPTIONS</b>		
<b>+AB</b>	Additional Battery	<b>+€1550</b>
<b>COMMODITY CODE: 8433520000</b>		

All prices exclude applicable taxes. We reserve the right to change pricing in line with significant exchange rate movements or application of import / export tariffs.

# MG250 ARENA LEVELLER



MODEL	DESCRIPTION	RETAIL
<b>MG250</b>	Standard Specification: - 2.3m Working Width - Hot Dip Galvanised - 22x11x8" Tyres - 14 Spring Tines - Rear Consolidation Roller for wax and fibre stabilised surfaces	<b>€2450</b>
<b>AVAILABLE OPTIONS</b>		
<b>+3P</b>	3 Point Linkage Mounted Version	<b>+€250</b>
<b>COMMODITY CODE: 8432291000</b>		

All prices exclude applicable taxes. We reserve the right to change pricing in line with significant exchange rate movements or application of import / export tariffs.

# AH200 ARENA HARROW



MODEL	DESCRIPTION	RETAIL
<b>AH200</b>	Standard Specification: <ul style="list-style-type: none"><li>- 2m Working Width</li><li>- Heavy Duty Steel Frame</li><li>- 19x7x8" Tyres</li><li>- 40 Spring Tines</li><li>- 12v Lifting Actuator</li><li>- 3 position tine adjustment</li><li>- Rear Consolidation Roller</li><li>- 6 Front Mounted 'S' Tines</li></ul>	<b>€3280</b>

**COMMODITY CODE: 8432291000**

All prices exclude applicable taxes. We reserve the right to change pricing in line with significant exchange rate movements or application of import / export tariffs.

# TH200 TINE HARROW



MODEL	DESCRIPTION	RETAIL
<b>TH200</b>	Standard Specification: - 2m Working Width - Heavy Duty Steel Frame - 19x7x8" Tyres - 40 Spring Tines - 12v Lifting Actuator - 3 position tine adjustment	<b>€2850</b>

**COMMODITY CODE: 8432291000**

All prices exclude applicable taxes. We reserve the right to change pricing in line with significant exchange rate movements or application of import / export tariffs.

# FR150 FIELD ROLLER



MODEL	DESCRIPTION	RETAIL
<b>FR150</b>	Standard Specification: - 1.5m working width - Empty Weight: 205kg - Filled Weight: 500kg - 50mm Ball Coupling - Powder Coated Finish	<b>€1250</b>
<b>AVAILABLE OPTIONS</b>		
<b>+PH</b>	Additional Pin Hitch	<b>+€60</b>
<b>COMMODITY CODE: 843280000</b>		

**NB: Recommended minimum quantity of 2 units - additional delivery surcharge may apply to single unit orders.**

All prices exclude applicable taxes. We reserve the right to change pricing in line with significant exchange rate movements or application of import / export tariffs.

# TF350 TRAILED FEEDER



MODEL	DESCRIPTION	RETAIL
<b>TF350</b>	Standard Specification: - 350L Capacity (approx) - Mudguards - PVC Tonneau Cover - 22x11x8" Tyres - Electronic Counter	<b>€2675</b>
AVAILABLE OPTIONS		
<b>+OT</b>	25x13x9" oversize tyres in place of standard 22x11x8"	<b>+€240</b>
<b>+TA</b>	Twin axle in place of standard axles, c/w mudguards	<b>+€780</b>
<b>+ES</b>	Extension sides to increase capacity by 250L (approx)	<b>+€160</b>
<b>+NB</b>	Nudge Bar to deflect livestock	<b>+€110</b>
<b>+RL</b>	Road IVA Legal Version, LED Lights, 20.5x8x10" tyres & suspension axles.	<b>N/A</b>
<b>+CA</b>	Additional Control Box incl. wiring	<b>+€400</b>
COMMODITY CODE: 8423892000		

All prices exclude applicable taxes. We reserve the right to change pricing in line with significant exchange rate movements or application of import / export tariffs.



# MF350 MOUNTED FEEDER



MODEL	DESCRIPTION	RETAIL
<b>MF350</b>	Standard Specification: - Designed for UTV Bed Mounting - 350L Capacity (approx) - PVC Tonneau Cover - Electronic Counter - Adjustable Discharge Chute	<b>€2250</b>
<b>AVAILABLE OPTIONS</b>		
<b>+CA</b>	Additional Control Box c/w wiring & mounting plates	<b>+€400</b>
<b>+ES</b>	Extension sides to increase capacity by 250L (approx)  * Not suitable for UTVs - 4x4 only	<b>+€160</b>
<b>COMMODITY CODE: 8423892000</b>		

All prices exclude applicable taxes. We reserve the right to change pricing in line with significant exchange rate movements or application of import / export tariffs.

# TGF350 GAME FEEDER



MODEL	DESCRIPTION	RETAIL
<b>TGF350</b>	Standard Specification: - 350L Capacity (approx) - Variable spread width - Feed Shutter - Control Box - Heavy Duty, High Torque Motor - Direct Drive - Variable Vane Spinner	<b>€3625</b>
AVAILABLE OPTIONS		
<b>+CA</b>	Additional Control Box c/w wiring & mounting plates	<b>+€400</b>
<b>+ES</b>	Extension sides to increase capacity by 250L (approx)	<b>+€160</b>
<b>+OT</b>	25x13x9" oversize tyres in place of standard 22x11x8"	<b>+€240</b>
<b>+RL</b>	Road Legal Version c/w LED Lights, 20.5x8x10" tyres, suspension axles. Fully IVA road approved.	<b>N/A</b>
COMMODITY CODE: 8436809000		

All prices exclude applicable taxes. We reserve the right to change pricing in line with significant exchange rate movements or application of import / export tariffs.

# MGF350 MOUNTED GAME



MODEL	DESCRIPTION	RETAIL
<b>MGF350</b>	Standard Specification: - 350L Capacity (approx) - Easy loading with fork lift - Variable spread width - Feed Shutter - Control Box - Heavy Duty, High Torque Motor - Direct Drive - Variable Vane Spinner - Fits all popular UTVs	<b>€3125</b>
<b>AVAILABLE OPTIONS</b>		
<b>+CA</b>	Additional Control Box c/w wiring & mounting plates	<b>+€400</b>
<b>+ES</b>	Extension sides to increase capacity by 250L (approx)  * Not suitable for UTVs - 4x4 only	<b>+€160</b>
<b>COMMODITY CODE: 8436809000</b>		

All prices exclude applicable taxes. We reserve the right to change pricing in line with significant exchange rate movements or application of import / export tariffs.

# ST150 OFF ROAD TRAILER



MODEL	DESCRIPTION	RETAIL
<b>ST150</b>	Standard Specification: - 1.53m x 1.02m (5' x 3'3") internal dimensions - Solid folded steel sides with laser cut perforations - Ramp tailgate with integral door - 22x11x8" Tyres - Swivel Drawbar - Aluminium Tread-plate Floor	<b>€1450</b>
AVAILABLE OPTIONS		
<b>+MG</b>	Mudguards (Standard Wheels Only)	<b>+€160</b>
<b>+LP</b>	Lamb Partition	<b>+€90</b>
<b>+OT</b>	25x13x9" Oversize tyres	<b>+€240</b>
COMMODITY CODE: 8430690000		

All prices exclude applicable taxes. We reserve the right to change pricing in line with significant exchange rate movements or application of import / export tariffs.

# LT150 LOW SIDED TRAILER



MODEL	DESCRIPTION	RETAIL
<b>LT150</b>	Standard Specification: - L 1.54m x W 1.02m x H 0.47m (5' x 3'3") internal dimensions - Solid folded steel sides - Drop Tailgate - 22x11x8" Tyres - Swivel Drawbar - Fully Galvanised - Aluminium Tread-plate Floor	<b>€1350</b>
AVAILABLE OPTIONS		
<b>+MG</b>	Mudguards (Standard Wheels Only)	<b>+€160</b>
<b>+RT</b>	Ramp Tailgate	<b>+€90</b>
<b>+OT</b>	25x13x9" Oversize tyres	<b>+€240</b>
COMMODITY CODE: 8430690000		

**NB: Recommended minimum quantity of 2 units - additional delivery surcharge may apply to single unit orders.**

All prices exclude applicable taxes. We reserve the right to change pricing in line with significant exchange rate movements or application of import / export tariffs.

# DT100 TIPPING TRAILER



MODEL	DESCRIPTION	RETAIL
<b>DT100</b>	Standard Specification: - Hydraulic Power Pack - On-board Battery - Galvanised Finish - Auto Latching/Unlatching Tailgate - Max Weight (Laden) 1400kg - Volume (heaped) 1.7M <sup>3</sup> - Pump Capacity 4.5 L @ 160 Bar - Tipping Angle of 50° - 4 x large 22x11x8" tyres	<b>€3800</b>
<b>DTC100</b>	As above with: - Hydraulic Power Pack Removed For use with Compact Tractors - Long reach hoses	<b>€3500</b>
AVAILABLE OPTIONS		
<b>+LK</b>	Lighting Kit (Not for highway use)	<b>+€250</b>
<b>+WR</b>	Wireless Remote Kit	<b>+€210</b>
COMMODITY CODE: 8430690000		

All prices exclude applicable taxes. We reserve the right to change pricing in line with significant exchange rate movements or application of import / export tariffs.

# FT100 FLAT BED TRAILER



MODEL	DESCRIPTION	RETAIL
<b>FT100</b>	<p>Standard Specification:</p> <ul style="list-style-type: none"> <li>- Hydraulic Power Pack</li> <li>- On-board Battery</li> <li>- Galvanised Finish</li> <li>- Drop down &amp; Removable Tailgate &amp; Sides</li> <li>- Integrated Steel Floor</li> <li>- Max Weight (Laden) 1400kg</li> <li>- Volume (heaped) 1.7M<sup>3</sup></li> <li>- Pump Capacity 4.5 L @ 160 Bar</li> <li>- Tipping Angle of 50°</li> <li>- 4 x large 22x11x8" tyres</li> </ul>	<b>€4100</b>
<b>FTC100</b>	<p>As above with:</p> <ul style="list-style-type: none"> <li>- Hydraulic Power Pack Removed For use with Compact Tractors</li> <li>- Long reach hoses</li> </ul>	<b>€3800</b>
AVAILABLE OPTIONS		
<b>+LK</b>	Lighting Kit (Not for highway use)	<b>+€250</b>
<b>+WR</b>	Wireless Remote Kit	<b>+€210</b>
COMMODITY CODE: 8430690000		

All prices exclude applicable taxes. We reserve the right to change pricing in line with significant exchange rate movements or application of import / export tariffs.

# BT500 BALE TRANSPORTER



MODEL	DESCRIPTION	RETAIL
<b>BT500</b>	Standard Specification: <ul style="list-style-type: none"><li>- Twin Pivoting Axle</li><li>- Electric Winch</li><li>- Wireless Remote</li><li>- 1.5m (5') Max Bale Diameter</li><li>- 900kg Max Bale Weight</li><li>- Galvanised</li><li>- Foot operated release</li></ul>	<b>€2750</b>
<b>AVAILABLE OPTIONS</b>		
<b>+OB</b>	On board battery option for conversion into self powered machine.	<b>+€300</b>
<b>COMMODITY CODE: 8433300000</b>		

All prices exclude applicable taxes. We reserve the right to change pricing in line with significant exchange rate movements or application of import / export tariffs.



# WHY CHOOSE CHAPMAN?

Founded in 2010, we're one of the newer manufacturers in the machinery world. We often get asked by potential customers why we think our machinery is better than the existing providers, so here are a few reasons why we're great to deal with.



## 2 YEAR WARRANTY

To get to number 1 we strive to produce high quality machinery, and stand by it with an industry leading 2 year warranty



## MANUFACTURED IN GREAT BRITAIN

We are certified Made In Britain members and all of our products are proudly manufactured and hand built at our base in Devon, UK.



## WE INNOVATE

We proudly design each and every one of our machines to feature innovative, unique features, to give you the best user experience.

# PARTS



Need a spare part? We can supply spare parts for all Chapman machines, many available from stock ready for immediate dispatch. You can find the required part number on the product parts drawing in the relevant product download section of our website **[www.chapman.co.uk](http://www.chapman.co.uk)**.

You can order spare parts direct from [www.chapman.co.uk/spares](http://www.chapman.co.uk/spares) or via your local distributor. Alternatively, you can contact us direct on the details below during office hours of 8-5pm Mon-Thurs, 8-3.45pm Friday

**E:** [sales@chapman.co.uk](mailto:sales@chapman.co.uk)  
**T:** 01288 308 149

## PRICES

All prices are exclusive of applicable taxes / VAT. Whilst we will endeavour to hold these prices, we reserve the right to change specification and pricing without prior notice in line with unforeseen movement in exchange rates, supplier component price rises, inward / outward tariffs etc. Delivery is included for machine orders within Mainland UK and Ireland, although some areas (for example Scottish Islands) may incur delivery surcharges. Risk passes upon delivery, title for goods remains with Chapman Machinery Ltd until such time as cleared payment is received in full. Trade pricing is given in accordance with our Dealer Sales Terms, and by purchasing parts or products at Trade Pricing you are agreeing to be bound by these terms. Breaches of these terms may result in your trade account being suspended. UK orders must be made in pound sterling unless agreed otherwise in writing by Chapman Machinery Ltd.

# NOTES

A large rectangular box with a red border, containing 18 horizontal grey lines for writing notes. The lines are evenly spaced and extend across the width of the box.

# CHAPMAN

Chapman Machinery Ltd, Hele Barton, Week St. Mary, Holsworthy,  
Devon, UK, EX22 6XR

Tel: +44(0)1288 308149  
Version V2

**[WWW.CHAPMAN.CO.UK](http://WWW.CHAPMAN.CO.UK)**

[sales@chapman.co.uk](mailto:sales@chapman.co.uk)