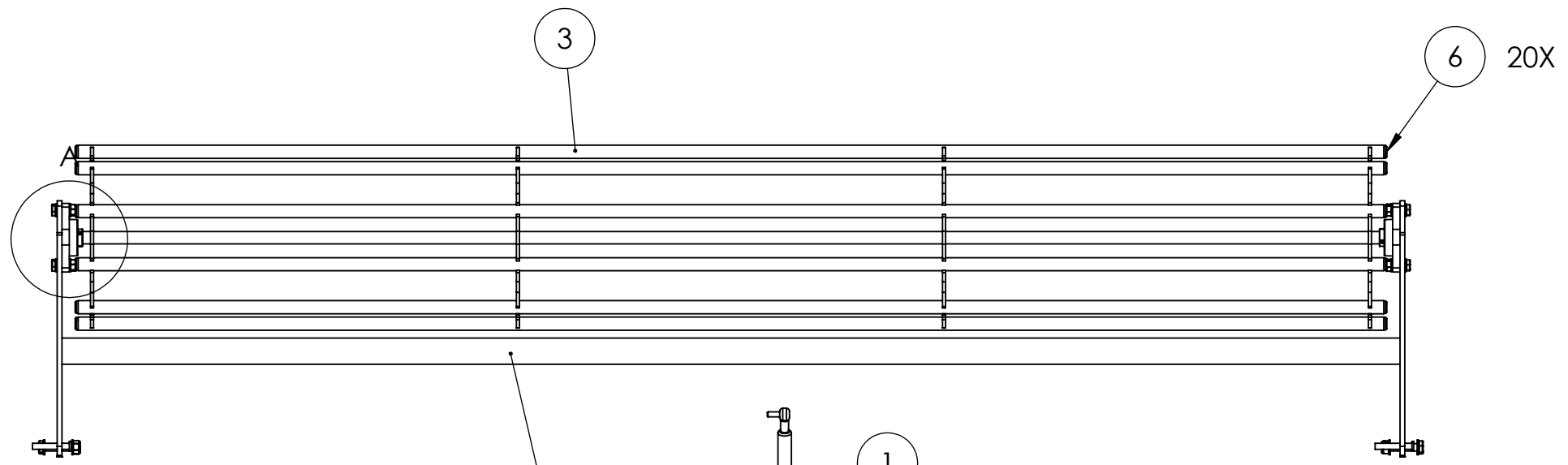


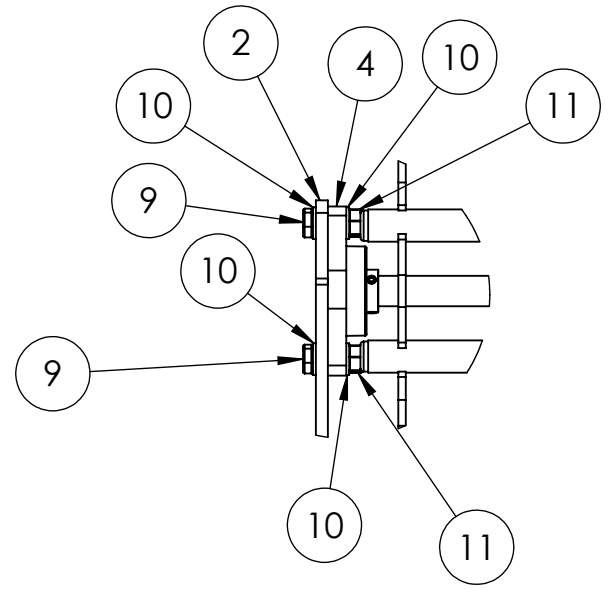
6 5 4 3 2 1

D

D



DETAIL A
SCALE 1 : 5



MODEL:	MG250+RR OPTION
YEAR/ MARK:	MK5 10/2016 ONWARDS

6 5 4 3 2 1

B

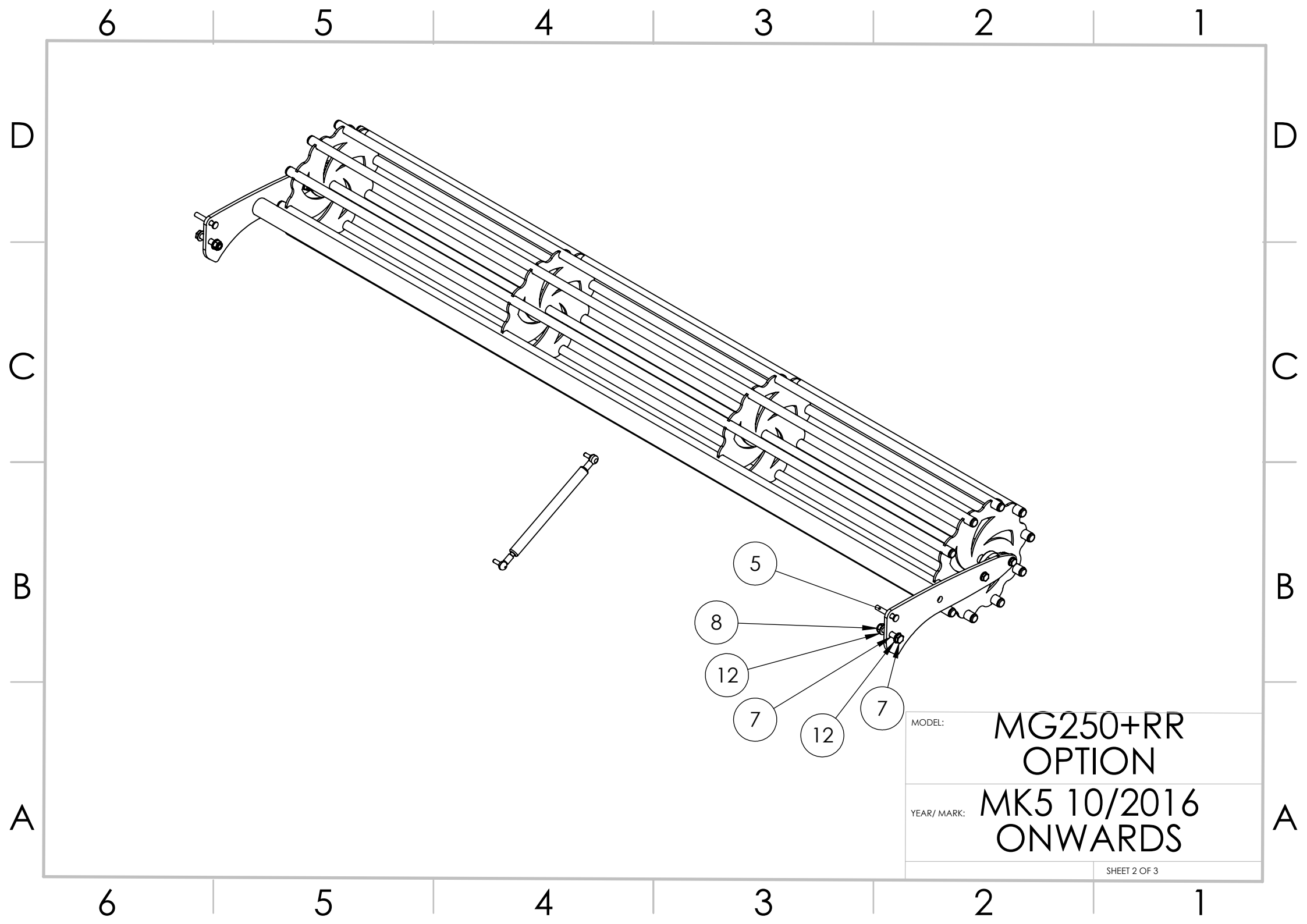
B

C

C

A

A



MODEL: MG250+RR
OPTION
YEAR/ MARK: MK5 10/2016
ONWARDS

6 5 4 3 2 1

ITEM NO.	PART NUMBER	DESCRIPTION	+RR Option/QTY.
1	GST-700N	GAS STRUT 1247-8163	1
2	MG250-RRC	REAR ROLLER CARRIER ASSEMBLY	1
3	MG250-RRA	REAR ROLLER ASSEMBLY	1
4	SFT-20	BEARING UNIT HOUSED OVAL 20MM ID	2
5	LP9568KR	SHAFT LOCKING PIN 9.5MMX68MM	2
6	BTC-20	TUBE CAP TO SUIT 20MM TUBE UP TO 3MM WALL	20
7	M12-60HB	M12X60 HEX HEAD BOLT	2
8	M12-000NN	M12 NYLOCK NUT	2
9	M10-40HB	M10X40 HEX HEAD SET SCREW	4
10	M10-000PW	M10 PLAIN WASHER FORM A	8
11	M10-000NN	M10 NYLOCK NUT	4
12	M12-000PW	M12 PLAIN WASHER FORM A	4

MODEL: **MG250+RR
OPTION**

YEAR/ MARK: **MK5 10/2016
ONWARDS**

6 5 4 3 2 1

D
C
B
A

D
C
B
A