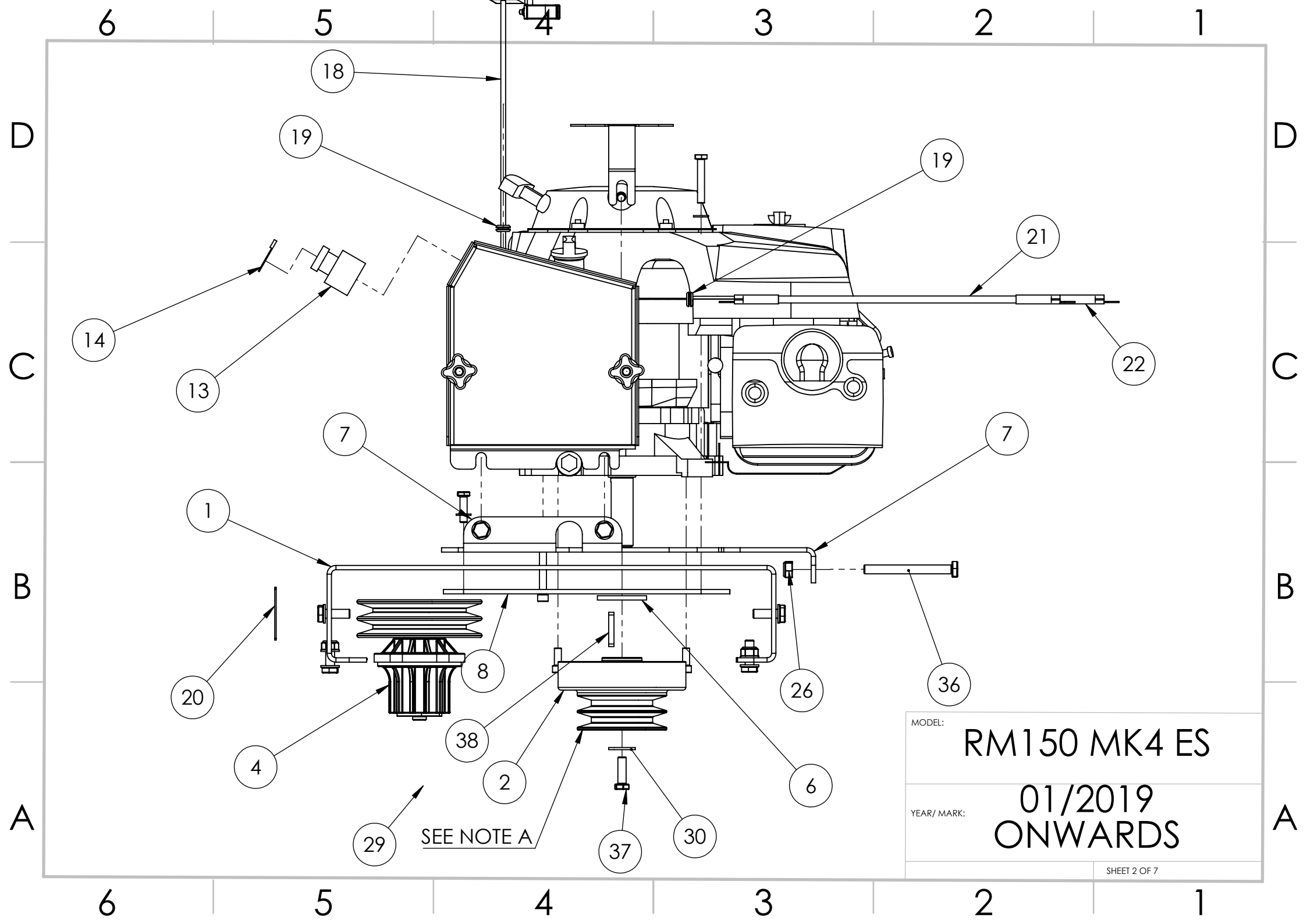


MODEL: RM150 MK4 ES

YEAR/ MARK: 01/2019 ONWARDS



MODEL: RM150 MK4 ES

YEAR/ MARK: 01/2019 ONWARDS

ITEM NO.	PART NUMBER	DESCRIPTION	RM150-ES/QTY.
1	RM-ERA	ENGINE RISER ASSEMBLY, RM SERIES	1
2	K125-1922	CLUTCH, 145MM OD, 4" 2 GROOVE PULLEY, 1" INPUT SHAFT	1
3	RM150-BGR	BELT GUARD RH RM150	1
4	RM-SA	SPINDLE ASSEMBLY, RM, 2 GROOVE	3
5	RM120-009	THROTTLE CABLE HOLDER, RM SERIES	1
6	RM120-074	CLUTCH WASHER RM SERIES	1
7	RM-ESA	ENGINE SLIDE PLATE ASSEMBLY, RM SERIES	1
8	RM-ECA	ENGINE CAPTIVE ASSEMBLY, RM SERIES	1
9	RM-DMA	DRAWBAR MOUNT ASSEMBLY RM SERIES	1
10	RM150-RGA	REAR GUARD ASSEMBLY, RM150	1
11	RM-BBA	BATTERY BASE ASSEMBLY	1
12	518901026a514	BATTERY POWERSPORTS AGM 12V 18AH	1
13	XB5AA31	PUSHBUTTON 28MM GREEN, NORMALLY OPEN	1
14	ZBY2303	INDICATOR PLATE, START TEXT, TO SUIT XB5AA31 PUSHBUTTON	1
15	F188-40 M10	HANDWHEEL M10 THROUGH THREADED 40MM 4 LUG	2

MODEL:	RM150 MK4 ES
YEAR/ MARK:	01/2019 ONWARDS
SHEET 3 OF 7	

6

5

4

3

2

1

ITEM NO.	PART NUMBER	DESCRIPTION	RM150-ES/QTY.
16	RM-BLA	BATTERY LID ASSEMBLY	1
17	RM-BTB	BATTERY TOP BRACKET RM SERIES	1
18	RM-TA	THROTTLE ASSEMBLY COMPLETE, RM SERIES	1
19	498047	RUBBER GROMMET, PVC, 10MM ID, 16MM OD, 7MM THICK, 12MM HOLE DIA	3
20	SERIALPLATE	SERIAL PLATE CHAPMAN	1
21	BCB-350	BATTERY CABLE BLACK 350MM	1
22	BCR-400	BATTERY CABLE, RED, 400MM LONG	1
23	M10-20HB	M10 x 20 Hex Head Bolt	7
24	M10-000PW	M10 PLAIN WASHER FORM A	28
25	M10-30HB	M10 x 30 Hex Head Bolt	12
26	M10-000NN	M10 NYLOCK NUT	10
27	M8-000NN	M8 NYLOCK NUT	13
28	M8-30HS	M8 x 30 Hex Head Set Screw	14
29	7-16 20 x 1 1-4 UNF	7-16 x1 1-4 UNF "0 Hex Head Bolt	3
30	M10-000PWG	M10 Plain Washer Form G	5
31	M10-000CN	M10 Cage Nut	3
32	M8-50HB	M8 x 50 Hex Head Bolt	1
33	M8-000PW	M8 Plain Washer From A	28

MODEL:

RM150 MK4 ES

YEAR/ MARK:

01/2019
ONWARDS

SHEET 4 OF 7

6

5

4

3

2

1

D

D

C

C

B

B

A

A

6 5 4 3 2 1

ITEM NO.	PART NUMBER	DESCRIPTION	RM150-ES/QTY.
34	M8-20CS	M8 x 20 Cap Head Set Screw	2
35	M8-50CS	M8 x 50 Cap Head Set Screw	1
36	M10-100HS	M10 x 100 Hex Head Set Screw	1
37	3-8 24 x 1 1-4 UNF	3-8 x1 1-4 UNF 24 Hex Head Bolt	1
38	68856640	KEYWAY, 6X6X40MM FEATHERED ENDS STEEL	1
39	RM150-BGL	BELT GUARD LH, RM150	1
40	BX63	BELT, BX63, COGGED RAW EDGE	2
41	RM150-MDA	MAIN DECK ASSEMBLY RM150	1
42	RM150-AA	AXLE ASSEMBLY, RM150	1
43	FM120-011	FIXING STRIP, FM120 REV B	2
44	RM150-019	FIXING STRIP SHORT 5MM	1
45	ADR-200H	HUB 4X4" SSP	2
46	WAT-1978-4x4	WHEEL AND TYRE ASSEMBLY 19X7X8 WANDA P308 ON 4X4" PCD	2
47	RBR-570	RUBBER STRIP, 570MM LONG, 5MMX100MM INSERTION	2
48	RBR-500	RUBBER STRIP, 500MM LONG, 5MMX100MM INSERTION	1
49	MFM-1218-12	IGUS BEARING MFM 12MM ID 18MM OD 12MM THICK TOP HAT STYLE MFM-1218-12	1
50	SHS-12(ASSY)	SWIVEL HITCH SCREW ASSEMBLY 12MM THREAD	1

MODEL: **RM150 MK4 ES**

YEAR/ MARK: **01/2019 ONWARDS**

SHEET 5 OF 7

6 5 4 3 2 1

D

D

C

C

B

B

A

A

6

5

4

3

2

1

ITEM NO.	PART NUMBER	DESCRIPTION	RM150-ES/QTY.
51	DBA-900	DRAWBAR 900MM LONG 50X50X5MM BOX ASSEMBLY	1
52	TL-1902000GP	TOP LINK CAT 0	1
53	SH-002		2
54	SH-003	SWIVEL HITCH WASHER 44MM ID 60MM OD 5MM THICK	1
55	8802429X	8802429X COUPLING 50MM BALL TO SUIT 43MM TUBE	1
56	SH-001	SWIVEL HITCH DRAWTUBE ASSEMBLY	1
57	RM150-HAC	HIEGHT ADJUSTMENT COMPLETE ASSEMBLY, RM150	1
58	M12-000NN	M12 NYLOCK NUT	5
59	M8-000LN	M8 Lug Nut	10
60	M16-90HB	M16 x 90 Hex Head Bolt	2
61	M16-000PW	M16 plain Washer	8
62	M16-000NN	M16 Nylock Nut	4
63	M12-90HB	M12X90MM HEX HEAD BOLT	2
64	M12-000PW	M12 PLAIN WASHER FORM A	8
65	M12-60HB	M12X60 HEX HEAD BOLT	1
66	M12-70HB	M12X70 HEX HEAD BOLT	1
67	M12-50HB	M12 x 50 Hex Head Bolt	1

MODEL:

RM150 MK4 ES

YEAR/ MARK:

01/2019
ONWARDS

SHEET 6 OF 7

6

5

4

3

2

1

D

D

C

C

B

B

A

A

ITEM NO.	PART NUMBER	DESCRIPTION	RM150-ES/QTY.
68	M10-90HS	M10x90 Hex Head Set Screw	1
69	M8-30CS	M8 x 30 Cap Head Set Screw	10
70	M16-150HB	M16x150 Hex Head Bolt	2
71	MFM-1618-12	IGUS BEARING 16MM ID, 18MM OD, 12MM THICKNESS TOP HAT STYLE MFM-1618-12	2
72	BTC-5050T	BOX CAP THICK WALL 3-5MM TO SUIT 50X50	1
73	6285	Blade 20 31/64" x 5/*	3
74	RM150-080	BLADE WASHER, NEW TYPE CUTTER BLADE, 5MM	3
75	GXV390-T1-DNE5	HONDA GXV390-T1-DNE5-OH 13HP VERTICAL SHAFT ENGINE 1" PARALLEL SHAFT ELECTRIC START	1

NOTES:

A: UP TO 06/2018 CLUTCH HAS A 125MM OUTSIDE DIAMETER. FROM 06/2017 CLUTCH HAS A 145MM OUTSIDE DIAMETER. 145MM DIAMETER CLUTCHES CANNOT BE FITTED TO OLDER MACHINES DUE TO STEELWORK CLEARANCE. IN THIS CASE A SMALLER 125MM DIAMETER CLUTCH CAN BE SUPPLIED.

MODEL:	RM150 MK4 ES
YEAR/ MARK:	01/2019 ONWARDS
SHEET 7 OF 7	